



**WORLD'S BEST  
ALLOY BULLBARS**

**East Coast Bullbars (ECB Pty Ltd)**

Tel: 07 3897 5700

Fax: 07 3283 1168

ecb@ecb.com.au www.ecb.com.au

29 Snook St  
Clontarf QLD 4019  
Australia

Po Box 122  
Margate QLD 4019  
Australia

**BMB45SY**

REPLACES: 11.02.10

REVISED: 09.07.10

## **FITTING INSTRUCTIONS**

### **MERCEDES SPRINTER (9/00–9/06) MODEL BIG TUBE™ PROTECTION BAR VEHICLE FRONTAL PROTECTION SYSTEM (VFPS) FOR AIR BAG & ADR COMPLIANT VEHICLES**

Check installation hardware before commencing.

**NOTE:** Some drilling is required. Ensure rust inhibitor is used on all drilled holes.

**TIP:** For drilled holes centre punch then use a sharp 5-6mm drill bit for a pilot hole.

1. Remove bumper cover from vehicle, two 13mm head bolts at number plate area, two plastic clips at step area. Pull forward.
2. Remove steps.
3. Position steel mounting bracket (supplied) on chassis. Use two original 13mm head step bolts to hold mount tight in position. **See figure 1.**
4. Clamp steel mounting bracket to chassis brackets. **See figure 2.**
5. With steel mounting bracket clamped in position drill a 10mm hole each side through chassis brackets using 10mm hole in steel mounting bracket as a guide. Use 3/8 x 1 ½ bolts/nuts and washers (supplied) **TIGHTEN. See figure 3.**
6. Remove clamps and drill a 13mm hole each side through chassis bracket using 13mm hole in steel mounting bracket as a guide. Use ½ x 1½ bolts, nuts and washers (supplied) **TIGHTEN.**
7. Using top 13mm hole in steel mounting bracket as a guide drill a 13mm hole through inner chassis only. Feed ½ x 1 ½ bolt on wire (supplied) through hole in bottom of chassis rail to protrude through steel mounting bracket. Use ½ washers and nuts (supplied) **TIGHTEN. See figure 4.**
8. Lift bonnet, remove multi-pin plugs from rear of headlight/indicator assemblies. Locate indicator wiring and splice to ECB indicator wiring. Locate park light wiring and splice to ECB park light wiring. Locate earth wiring and splice to indicator / park light earth. Use cable locks (supplied). Re-attach plugs.
9. Attach black clip lock trim to rear of protection bar. **NOTE:** Trim off lower edge on an angle so trim will sit flush with end of protection bar. **See figures 5, 6 & 7.**
10. Fit ECB LED indicator / park lights (supplied) into protection bar as per instructions supplied with the LED indicator kit. **NOTE: Ensure park light is to outside. See figure 8.**
11. Attach protection bar to outside of steel mounting bracket. Use ½ x 1 ½ bolts/nuts and washers (supplied).
12. Align protection bar in position. **See figure 9** for side view. Check bonnet opening clearance. **TIGHTEN ALL BOLTS.**
13. Connect indicator and park light wiring and **CHECK OPERATION.**



**WORLD'S BEST  
ALLOY BULLBARS**

**East Coast Bullbars (ECB Pty Ltd)**

Tel: 07 3897 5700

Fax: 07 3283 1168

ecb@ecb.com.au www.ecb.com.au

29 Snook St  
Clontarf QLD 4019  
Australia

Po Box 122  
Margate QLD 4019  
Australia

**IMPORTANT INFORMATION:** Towing points are built into bottom of steel mounting brackets. These are to be used together via a link. Instructions are to be handed to vehicle operator and left in vehicle.

### **ENSURE NUMBER PLATE IS CLEARLY VISABLE**

**Note:** When fitting/refitting the licence plate to the vehicle, ensure there is no obstruction to licence plate vision in accordance with local authorities. If required relocate licence plate to an alternate location.

#### **Further VFPS Notes:**

- a) Do not attach VFPS to the vehicle using anchorages not intended for this purpose (e.g. engine mounting bolts).
- b) Do not use this product for any vehicle make or model, other than those specified by the VFPS manufacturer.
- c) Do not remove the plaque or label from the VFPS.
- d) Do not modify the structure of the VFPS in any way.
- e) No accessory or fitment should project forward of the VFPS forward profile.
- f) **ENSURE THESE INSTRUCTIONS ARE LEFT WITH VEHICLE OWNER AND/OR OPERATOR.**

### **IMPORTANT INFORMATION**

Periodically check bolts and nuts for correct tightness, especially if travelling on rough roads

#### **FITTING KIT**

1 – Steel mounting bracket.	2 – 3/8 x 1 ½ bolts/nuts.
8 – ½ x 1 ½ bolts/nuts.	4 – 3/8 flat washers.
2 – ½ x 1 ½ bolts with 200mm wire only.	2 – 3/8 spring washers.
2 – ½ nuts.	1 – ECB LED Indicator / Park light kit
18 – ½ flat washers.	6 – Cable locks.
10 – ½ spring washers.	1 – 2500mm length 6mm black clip lock trim.



**Figure 1**



**Figure 2**



**WORLD'S BEST  
ALLOY BULLBARS**

**East Coast Bullbars (ECB Pty Ltd)**

Tel: 07 3897 5700

Fax: 07 3283 1168

ecb@ecb.com.au www.ecb.com.au

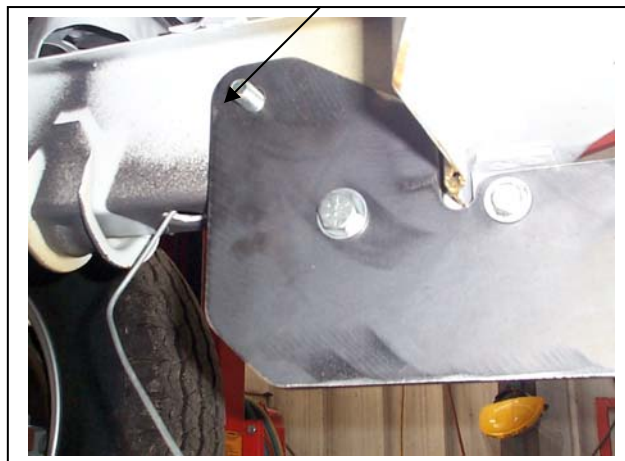
29 Snook St  
Clontarf QLD 4019  
Australia

Po Box 122  
Margate QLD 4019  
Australia

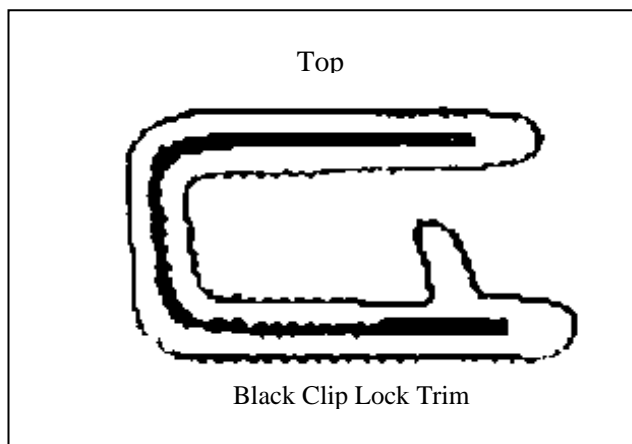
$\frac{1}{2}$  x 1  $\frac{1}{2}$  bolt on wire



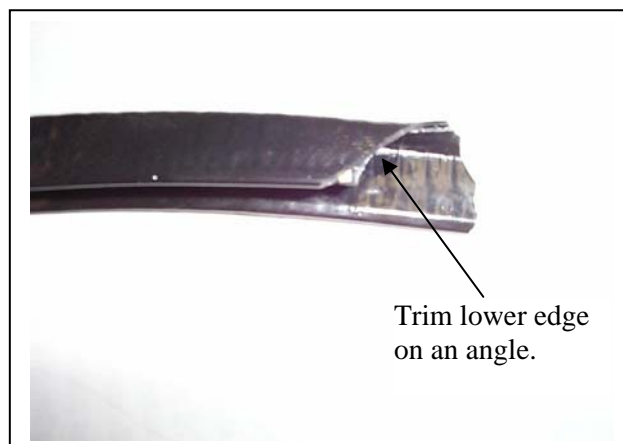
**Figure 3**



**Figure 4**



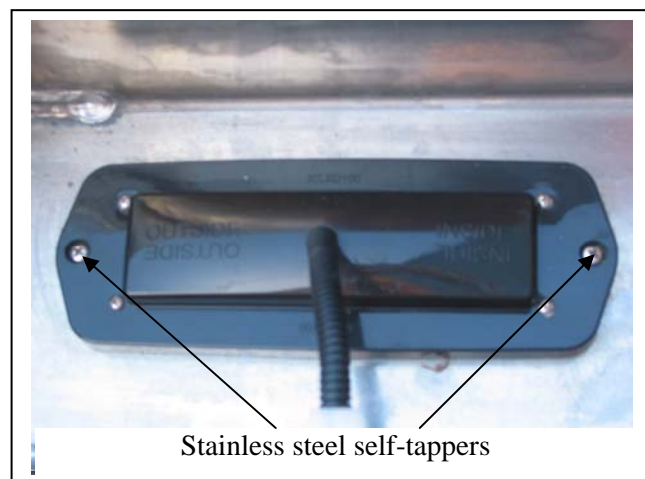
**Figure 5**



**Figure 6**



**Figure 7**



**Figure 8**



**WORLD'S BEST  
ALLOY BULLBARS**

**East Coast Bullbars (ECB Pty Ltd)**

Tel: 07 3897 5700

Fax: 07 3283 1168

ecb@ecb.com.au www.ecb.com.au

29 Snook St  
Clontarf QLD 4019  
Australia

Po Box 122  
Margate QLD 4019  
Australia



Approximately 10mm clearance.

**Figure 9**



**WORLD'S BEST  
ALLOY BULLBARS**

**East Coast Bullbars (ECB Pty Ltd)**

Tel: 07 3897 5700

Fax: 07 3283 1168

ecb@ecb.com.au www.ecb.com.au

29 Snook St  
Clontarf QLD 4019  
Australia

Po Box 122  
Margate QLD 4019  
Australia

## **We value your comments**

Dear Fitter,

ECB would like to know how you went with the installation of this product. We value your comment and may need to contact you to clarify some details so please complete your contact details clearly.

We would appreciate if you could complete as many of the following details as possible.

<b>Your Name:</b>	<b>Your contact No.</b>
<b>Product Part No.</b>	<b>Product Invoice No.</b>
<b>Product Description:</b>	<b>Make, model, and year of vehicle:</b>
<b>Product Work Order No.</b>	<b>Company your from/Company product purchased from:</b>

Was the fitting hardware supplied complete?	Yes <input type="checkbox"/>	No <input type="checkbox"/>
---	---------------------------------	--------------------------------

If no what was not supplied

---

---

---

Did the installation go well?	Yes <input type="checkbox"/>	No <input type="checkbox"/>
-------------------------------	---------------------------------	--------------------------------

Please provide comments

---

---

---

Please draw diagrams if you need to.

**Post to**  
Reply Paid 122  
PO Box 122  
Margate QLD 4019

**Fax to**  
(07) 3283 1168



**WORLD'S BEST  
ALLOY BULLBARS**

**East Coast Bullbars (ECB Pty Ltd)**

Tel: 07 3897 5700

Fax: 07 3283 1168

ecb@ecb.com.au [www.ecb.com.au](http://www.ecb.com.au)

29 Snook St  
Clontarf QLD 4019  
Australia

Po Box 122  
Margate QLD 4019  
Australia



WORLD'S BEST  
ALLOY BULLBARS

East Coast Bullbars (ECB Pty Ltd)

Tel: 07 3897 5700

Fax: 07 3283 1168

ecb@ecb.com.au www.ecb.com.au

29 Snook St  
Clontarf QLD 4019  
Australia

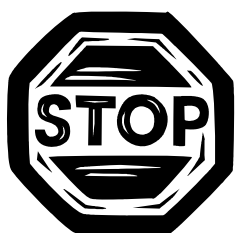
Po Box 122  
Margate QLD 4019  
Australia

## DESPATCH CHECKLIST BMB45SY

Work Order #	
Finish:	
Transport:	
Due Date:	

- ☐ 1 – Steel mounting brackets.
- ☐ 1 – Bolt Kit.
- ☐ 1 – ECB LED Indicator / Park light kit.
- ☐ 1 – 2500mm length 6mm black clip lock trim
- ☐ 2 – ECB Overriders – **Fitted to Bar**
- ☐ 2 – 6mm air scoops – **Fitted to Bar**
- ☐ 3 – 3mm air scoops – **Fitted to Bar**

**See other side of  
this page for  
photos of all  
mounts**



Is this product “the best it can be” Yes \_\_\_\_\_/\_\_\_\_\_

Wrapper's initials / Checker initials

If **NO** fix before continuing

All parts checked and completed by:

Nut and bolts: \_\_\_\_\_ Date \_\_\_\_/\_\_\_\_/\_\_\_\_

Order control: \_\_\_\_\_ Date \_\_\_\_/\_\_\_\_/\_\_\_\_

Final wrap check: \_\_\_\_\_ Date \_\_\_\_/\_\_\_\_/\_\_\_\_



**WORLD'S BEST  
ALLOY BULLBARS**

**East Coast Bullbars (ECB Pty Ltd)**

Tel: 07 3897 5700

Fax: 07 3283 1168

ecb@ecb.com.au www.ecb.com.au

29 Snook St  
Clontarf QLD 4019  
Australia

Po Box 122  
Margate QLD 4019  
Australia

